

100 Women to Watch

In the 2009 Female FTSE Report we included our first “100 Women to Watch” supplement which proved very popular. Six of last year’s women have gained a FTSE 350 board position during the past 12 months. They are: Linda Hudson, COO at BAE Systems; Deirdre Mahlan, CFO at Diageo; Dido Harding, CEO at Talktalk Telecom and NED at British Land Co.; Vivienne Cox, NED at Rio Tinto; Anne Minto, NED at Shire; and Genevieve Berger, NED at Smith & Nephew.

Once more we have identified 100 women who are currently on the executive committees of FTSE 350 companies or in major financial institutions, and who are poised and ready for a board position. These are just 100 of the 2,551 women mentioned in the main report who search consultancies and nomination committees should be considering.

Thanks to doctoral student, Patricia Pryce, for her help compiling this list.



Amanda Mackenzie

Amanda has been Aviva’s Chief Marketing Officer since 2008. Previous roles include Commercial and Marketing Director for British Gas, European VP of Marketing at Hewlett Packard and Group Marketing/ Brand Director at BT. She is a Fellow of the Royal Society of Arts and the Marketing Society, a member of the Government Strategic Marketing Advisory Board and a governor of the National Youth Orchestra.



Angela Williams

Angela joined Centrica plc as Divisional Director HR for British Gas. Prior to this she was HR Director at Land Securities, Regional HR Director for Europe at Electronic Arts, and HR and Development Vice President at Tradus. Throughout her career, Angela has also held managerial roles at Walt Disney, BH Blackwell and was Advisor for Esso.



Anita Graham

Anita has been with Shire since 2004. She is Executive Vice President Corporate Business Service Group and Chief Administrative Office, and a member of Shire’s Leadership Team. She has extensive experience in HR, in both Europe and the US, after being Vice President of Human Resources at Cytoc Corporation and holding senior HR positions at Serono and Scudder Kemper Investments.



Ann Cairns

Ann has been head of the financial advisory group, Europe, Alvarez & Marsal since September 2008, having previously worked as CEO of transaction banking at ABN Amro and spent 15 years at Citigroup. She is an NED on the board of Newcastle Building Society, has a first-class degree in mathematics and a master’s degree in statistics.



Ann Sherry

Ann has been Regional CEO of Carnival Australia since 2007. She has held senior bureaucratic roles in the Australian Government, as well as CEO positions at Westpac and the Bank of Melbourne. She holds NED positions on a number of boards including Wilson HTM Investment Group and the Australian Indigenous Education Foundation. She holds prizes such as the Queen’s Award and the Australian Government’s Centenary Medal.



Anne Hyland

Anne joined Vectura in 2002 as CFO, Company Secretary and Executive Director. Prior to this, she was a Director of Corporate Finance at Celltech Group plc. She joined Celltech following the merger with Medeva plc, where she was Finance Director for the UK Division. Anne was also an audit manager at KPMG, London.



Anne Jaeger

Anne became Chief Auditor at RSA Insurance Group in 2008. Prior to that she was Regional Chief Auditor in Denmark. She was part of the Codan Group Executive leadership team and was previously CFO at Maersk Data and CFO at Codan. She spent 13 years with KPMG as a State Authorised Public Accountant. She holds an MSc from Copenhagen Business School.



Anne Richards

Anne has been Chief Investment Officer at Aberdeen Asset Management and Murray Income Trust, since 2003 and 2005 respectively. She was previously a joint Managing Director, Chief Investment Officer and Executive Director at Edinburgh Fund Managers Group. Anne was also an MD at Merrill Lynch. She is a UK Chartered Engineer and holds an MBA from INSEAD.



Barbara Deptula

Barbara has been Chief Corporate Development Officer at Shire since 2008. She also sits on the board of CombinatorX as an NED. Barbara was previously President of the Biotechnology Division of Sicom. She held senior management positions in marketing, product development, licensing and business development at various companies. She has an MBA from Chicago Graduate School of Business.



Bronwyn Curtis

Bronwyn is Chairman of global research, HSBC and is a governor of the London School of Economics. She sits on various industry committees and was awarded an OBE for services to business economics in 2008. She has previously worked for Bloomberg, Deutsche Bank and Nomura.

**Caroline Kirby**

Caroline joined the Liberty International group in 1992 and was appointed Director of Capital Shopping Centres in 2005. She is responsible for the investment management of the shopping centre portfolio. She is also an Executive Director of Capital Shopping Centres Debenture plc. Caroline is a member of the Royal Institute of Chartered Surveyors.

**Caroline Taylor**

Caroline is Global Head of Trading and Execution for Fundamental Equities, Goldman Sachs Asset Management. With 23 years' trading experience in broking and investment management, she is responsible for teams in New York, London, Tokyo, Singapore and Beijing, and for portfolio construction globally. She joined Goldman in 1998 from Gartmore, was made Managing Director in 2000 and has served on the Investment Management Association's dealing committee and Euronext's institutional traders advisory council.

**Carolyn Fairbairn**

Carolyn has been Group Development and Strategy Director at ITV since 2007. She is Chairman at Freesat and an NED on the boards of FSA and Digital UK. Carolyn was previously a partner at McKinsey, Strategy Director at the BBC and a member of Downing Street Policy Unit. She was a journalist for the Economist and World Bank. Carolyn holds a degree from Cambridge and an MBA from INSEAD.

**Catherine May**

Catherine joined Centrica as Director of Corporate Affairs in September 2006, having previously been Group Director of Corporate Relations for Reed Elsevier. Prior to that, she was a partner at Luther Pendragon and held various positions at US West International.

**Catherine Tanna**

Catherine is a Regional MD at BG Group, responsible for all the Group's activities in Australia. She has also been a Managing Director at Queensland Gas since April 2009. She has previously held the role of Division EVP at Royal Dutch Shell Group and before that worked in exploration and production roles for BHP Petroleum. She is a qualified solicitor in the UK and Australia.

**Cathryn Lyall**

Cathryn is head of the London office for BM&F Bovespa, the Brazilian securities, commodities and futures exchange, the largest in Latin America and third largest in the world. She previously worked as chief operating officer at ICAP and Head of EMEA for the Chicago Board of Trade.

**Cécile Belaman**

Cécile is the Director of Investor Relations, Europe, for Bain Capital. Before joining Bain Capital in 2008, Cécile spent nine years at Morgan Stanley, most recently in the bank's private equity fund of funds business, and she has also worked for the financial sponsors group at JP Morgan and for HVS International.

**Charlotte Hogg**

Charlotte became Managing Director of Experian UK and Ireland in 2008. Her previous roles were MD of Discover Financial Services and Group MD at Morgan Stanley. Charlotte has a BA from Oxford University and was a Kennedy Scholar at the Kennedy School of Government, Harvard University.

**Charlotte Lambkin**

Charlotte joined BAE Systems as Group Communications Director in December 2004 and has responsibility for internal and external communications worldwide. Previously she spent ten years working in consultancy for Bell Pottinger where she specialised in investor relations, crisis management and media relations for large international companies in a variety of sectors. In 2008 Charlotte was appointed to the Executive Committee of BAE Systems which has responsibility for running the 105,000 strong global business.

**Claire Combes**

Claire is Head of Risk and Internal Audit at Capital Shopping Centres, which she joined in 2009. Prior to that she held similar roles at Marks and Spencer, Lonmin and Thresher. She qualified as an ACA with Coopers and Lybrand in 1993.

**Claire Thomas**

Claire has been a Senior VP Human Resources at GlaxoSmithKline since 2008. Prior to joining GSK, Claire held various sales and marketing positions in Ford Motor Company. In 2007, Claire was honoured as an Outstanding European Woman of Achievement.

**Dawn Reid**

Dawn became Division Director at Friends Provident in 2006, after being Compliance Director and Executive Officer within the company.

**Debbie Jones**

Debbie has been Senior VP of Corporate Development at Inmarsat Group since 2008. Previously, Debbie was Advisor at Eversheds LLP and Head of HR at Companies House Steering Board. She also held various positions within the UK Department of Trade and Industry and is a member of the Chartered Institute of Personnel and Development.

**Deborah Baker**

Currently Director for People at BSKyB, since 2007, Deborah joined Sky from Burberry where she was Senior VP and Head of Worldwide HR. She was also HR Director at Laura Ashley. Deborah spent the early part of her career in various roles at companies such as Ford Motor Company, Schlumberger and Grand Metropolitan.

**Deirdre Connelly**

Deirdre assumed the role of President at GlaxoSmithKline North American Pharmaceuticals in 2009. Prior to this, she was President of the US operations at Eli Lilly, SVP in HR and held various other roles in sales and marketing. In addition, she sits on the boards of Macy's and Indianapolis Opera as an NED. In 2010 she was voted Woman of the Year for Healthcare Businesswomen Association.

**Denise Wylie**

Denise is Co-chief Operating Officer, EMEA, India and Asia for Goldman Sachs. She joined Goldman in 1994 as manager of foreign exchange operations in London and has held roles in energy, commodities and derivatives operations. Before joining Goldman, Denise previously worked for Citigroup and Whitbread Beer. She is an NED for LCH Clearnet Group Ltd and European Power Source Company (UK) Ltd.

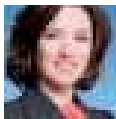
**Dominique Senequier**

Dominique is Chief Executive of AXA Private Equity, a firm that advises and manages \$25bn in assets with eight offices across three continents. She was ranked 50th in the world's most powerful women in 2009 by Forbes magazine.



Donna Imperato

Donna is a Division CEO and President at WPP where she has guided the agency from revered boutique to global leader admired for its uncompromising commitment to creativity. Donna has over 25 years' experience in communications and has advised many of the world's biggest brands. She's been named on PRWeek's "Power List" (2008) and in 2009 was inducted into the PRNews Hall of Fame.



Eileen Campbell

Eileen is CEO at Millward Brown Inc and an Executive Officer at WPP. Eileen joined Millward Brown in 2000 as CEO of the company's North American business unit and now has responsibility for all Millward Brown's businesses around the world. She has provided marketing consultation to a variety of Fortune 100 companies in the consumer packaged goods, financial services, automotive, technology, entertainment, and advertising industries.



Elizabeth Bolgiano

Elizabeth joined Smith & Nephew in 2004 as SVP in Human Resources and Orthopaedics and was appointed Group Director of Human Resources in 2007. Prior to joining Smith and Nephew, she was HR Vice President with Bristol-Myers Squibb, supporting US and international businesses, as well as global research institutes. Elizabeth holds an MBA from Cornell University.



Ellen Alemany

Ellen became Regional CEO at the Royal Bank of Scotland in 2007, after various other regional CEO positions. She is an NED on the boards of Federal Reserve Bank of Boston and Financial Services Roundtable and was Governor of the USA Federal Reserve System. Ellen was listed in Forbes 100 Most Powerful Women and in US Banker Magazine's The 25 Most Powerful Women in Banking.



Eugenia Ulasewicz

Eugenia is Regional President Americas at the Burberry Group. Her previous roles include Director of the Midwest Area at Saks Inc, Operations Executive at Bloomingdales and Regional President USA at Galeries Lafayette.



Fiona MacRae

Fiona is a Regional Head at Alliance Trust in her role as the Managing Director of European Equities since 2008.



Georgina Harvey

Georgina has been Regional MD Newspapers Division at Trinity Mirror since 2005. Previously at IPC Media as Group Advertising Sales Director for SouthBank, she went on to form IPC Advertising, as MD. After becoming a member of the Board of IPC Media, she was appointed MD of Wallpaper Group. Georgina is Director of the National Readership Survey and Chairman of the Periodical Publishers Association.



Gulshat Zholamanova

Gulshat joined Kazakhmys in 2005 as the Director of Financial and Technical Control Department and was appointed Vice Chairman for Financial and Economic Matters in 2008. She graduated in Information Systems in Economics from the Kazakh State Management Academy.



Gwyn Burr

Gwyn joined the Operating Board of Sainsbury in 2004 and is now the Customer Service/Colleague Director. She was previously at Nestlé Rowntree and ASDA/Wal-Mart where she held various Board level positions. Before joining Sainsbury's, Gwyn founded her own marketing consultancy, The Resultant Team.



Helen Stevenson

Helen is an Executive Officer at Yell Group plc and Chief Marketing Officer of Yell Ltd. She currently holds an NED at the Department for Work and Pensions. Previous roles include Regional Director at Mars Confectionery, where she worked for 18 years, and more recently Marketing Director at Lloyds TSB Group. Helen has a degree from Cambridge University.



Helena Morrissey

Helena is Chief Executive of Newton Investment Management, overseeing a business that has brought in £4.5bn of institutional money over the past two years. She is the only woman board member of the Investment Management Association and has launched the 30% Club, which aims to ensure that 30% of senior managers at Newton and elsewhere are female.



Irene Cowden

Irene has been Group HR Director for G4S since 2004. Prior to that, she was HR Director for First Africa Security and for Securicor, where she also held an executive board position. She is a council member at Accipitor Ltd and a member of the Chartered Institute of Personnel and Development.



Isabelle Ealet

Isabelle is Global Head of Commodities for Goldman Sachs having held various senior positions within the company since 2002. She joined Goldman in 1991 as an oil trader, becoming a partner in 2000.



Jacynthe Côté

Jacynthe has been Chief Executive, Rio Tinto Alcan since February 2009 and has significant operational and international experience in the aluminium industry. Her previous roles in Alcan include President and CEO, Bauxite & Alumina business group and senior management roles in business planning, human resources and environment, health and safety.



Jane Fraser

Jane is CEO of Citi Private Bank. She has held various positions with Citigroup including Global Head of Strategy and Mergers and Acquisitions and has previously worked for McKinsey and Goldman Sachs. Jane has a master's degree from Cambridge, and an MBA from Harvard.



Jane Kingston

Jane joined the Compass Group as HR Director in 2006. She became HR Director of BPB in 2002, after spending the majority of her career in a range of international HR roles in the motor, textile and electrical appliance industries. She is also a member of the Corporate Responsibility Committee.



Janette Bell

Janette joined Hammerson in 2010 in the new role of Sales and Marketing Director, responsible for driving growth in retail sales across the portfolio and managing relationships with customers. Janette started her career at Tesco, before moving to PricewaterhouseCoopers, where she provided senior consultancy on category, channel, marketing and pricing strategies to FMCG brands. She joined Hammerson from Centrica, where she held a number of senior marketing roles.



Julia Bond

Julia has had a 27 year career in capital markets – first with Bank of America, then 22 years with Credit Suisse where she was promoted to Managing Director in 1997. She has functional expertise in leading high profile investor businesses globally – specifically in the Central Bank and Sovereign Wealth Fund sector. Julia is an NED at Central London Community Healthcare, a trustee of Womankind Worldwide, and board member of City Women's Network.



Julia Simpson

Julia has been Director of Corporate Communication at British Airways since 2007. Her previous roles include Assistant Chief Executive at London Borough of Camden, Advisor and Communications Director for the UK Office of the Prime Minister, and Head of Media Relations at the Department of Education and Employment.



Karen Geary

Karen has been HR and Corporate Communications Director for Sage Group since 2005, and has more than 20 years of international HR experience across a variety of industries, in companies such as Monsanto Inc., Electrocomponents Group and Stena Line. Karen currently serves on the Advisory Board of Durham University Business School.



Karen Wood

Karen has been Group Executive and Chief People Officer at BHP Billiton since 2007. Previous positions include Chief Governance Officer, Group Company Secretary, Special Adviser and Head of Group Secretariat. She is a member of the Takeovers Panel, a Fellow of the Institute of Chartered Secretaries and a member of the Law Council of Australia.



Kathryn Turner

Kathryn has been HR Group Director for Imperial Tobacco, since 2002. She sat on the board of Altadis as an NED and on the board of Somerfield as an ED. Prior to that, Kathryn was Operations Director at United Kenning.



Kim McFarland

Kim is Chief Operating Officer for Investec Asset Management after joining them in 1993 and spending the early part of her career with PWC. She also holds board positions for Investec Asset Management Ltd and Investec Asset Management Holdings Pty Ltd. She has an MBA from the University of Cape Town.



Lesley Lynn

Lesley is Head of Institutional Recovery Management, EMEA for Citigroup, having joined Citibank straight from Oxford University in 1977. She was a founding member of the Citi Women network in 1998 and is a Liveryman of the Guild of International Bankers.



Liz Hewitt

Liz has been Group Director of Corporate Affairs for Smith & Nephew since 2004. She worked for 10 years in the venture capital industry for Gartmore Investment Limited, Citicorp Venture Capital Limited and 3i Group plc. Liz was seconded by 3i to the Department of Trade and Industry to work on an SME financing programme. Liz is a Trustee of Cancer Research UK.



Lois Wark

A member of the Randgold Resources team since its inception, Lois is currently Group Corporate Communications Manager. She is responsible for the coordination of the group's communication and investor relations programmes as well as for the management of its South African subsidiary, Seven Bridges.



Loraine Woodhouse

Loraine joined the Liberty International Group in 2008 as Capital Shopping Centres' Finance Director. She has previously worked for Whitbread, where she held the role of Division Financial Director for Costa Coffee. Loraine also held various senior finance positions within Credit Suisse and Kingfisher.



Louise Smalley

Louise has been HR Director at Whitbread since 2007. Previously, she was HR Director for Whitbread Restaurants and David Lloyd. Louise is a trustee of People 1st Ltd.



Lucinda Bell

Lucinda joined British Land Company in 1991 and has held various roles in finance. She is currently Director of Tax and Financial Planning.



Lynne Peacock

Lynne has been CEO of Clydesdale Bank since 2004 and is on the Group Executive (UK) of National Australia Bank. Prior to that Lynne had 17 years at Woolwich Ltd., where she rose through various positions to become CEO.



Lynn Tetrault

Lynn has been Executive VP and Head of HR and Corporate Affairs at AstraZeneca since 2007. She is currently a board member of Medimmune Inc and was board member of the Human Resource Planning Society. Lynn holds qualifications from the University of Virginia School of Law and Princeton University.



Maggy McClelland

Maggy became MD of COLT Managed Services Division in 2008. Previously at BT as President Global Business Operations & Professional Services, Maggy was also Corporate Officer and General Manager of Motorola Professional Services. She sits on the board of Partnership Sourcing and is a member of the Advisory Board of Sutherland Global Services.



Mahnaz Safa

Mahnaz is Co-head of Debt Capital Markets, EMEA for UBS. She has been integral to the creation of the insurance and pensions industry group within UBS's fixed-income, currency and commodities division, which provides de-risking solutions to pension schemes. She is a board member of UBS's women's network, All Bar None.



Marcia Silverman

Marcia is Chairman of the Board at Ogilvy Public Relations Worldwide and Division Chairman at WPP. She has been at the company for 27 years and was named PR Week's 2009 PR Professional of the Year.



Margaret Cole

Margaret is Managing Director of Enforcement and Financial Crime, Financial Services Authority and sits on the board. She has previously been General Counsel at Babcock and Brown Limited.



Maria Ramos

Maria is a Group Divisional CEO at Barclays and a board CEO of ABSA Group. She has held NED positions at SabMiller, Remgro and Sanlam Life. She was a Director General in the South African government and has lectured at the University of Witwatersrand in South Africa and at LSE in the UK. In 2007 she was ranked 14th in Fortune's Most Powerful Women in International Business.



Maria Thompson

Maria joined Argos in 1990 and has held a number of roles. She was appointed Commercial Director, Argos Retail Group in 2003, and subsequently at Home Retail Group in 2006. Maria has worked in various marketing, buying and product management roles in the Young & Rubicon Group, Boots the Chemist and Associated British Foods.



Michelle Edkins

Michelle is Head of Corporate Governance for Europe, BlackRock. She is on the board of governors of the International Corporate Governance Network and serves on the investment committee of the Association of British Insurers. An economist by training, Michelle previously worked for New Zealand's Central Bank and the British High Commission in Wellington.



Mounissa Chodieva

Mounissa has been Head of Investor Relations and Public Relations at the Eurasian Natural Resources Corporation since 2006, having previously held the position of VP of Corporate Finance. Mounissa is currently undertaking a PhD in International Law at the Moscow State Institute of International Affairs.



Muriel Anton

Muriel is now VP at Canadian Chamber of Commerce for the Czech Republic. She was previously CEO of Vodafone Czech Republic, having served before as the CFO. Muriel started her career as an Economist at IMC Consulting Group in Canada, lecturing in economics at the University of Alberta. She held various roles in finance within AGT Ltd and BCT Telus Communications (including Finance Director).



Nayna McIntosh

Nayna became Division Director for Store Marketing and Design at Marks & Spencer in 2008. From 2001 she was part of the executive management team that set up the Per Una brand. Nayna was previously Director of Sales and Marketing for Asda Stores and Regional Executive South of England for both Asda Stores and Next.



Nicola Shaw

Nicola has been with FirstGroup since 2005 and is now a Strategic Advisor to the CEO. She has also been on the board of FirstGroup and a Divisional Managing Director with the company. Prior to joining FirstGroup Nicola was a Managing Director at the Strategic Rail Authority and had various roles at Halcrow Holdings, London Transport and World Bank. She is also an NED with Aer Lingus. Nicola holds degrees from Oxford University and MIT.



Nicole Eagan

Nicole has been Chief Marketing Officer at Autonomy since 2006. She was previously Senior VP of Marketing, Chief Marketing Officer at Verity and Global Marketing VP at Quest Software and Peregrine. She holds a BA in Science from the Montclair University.



Niki Beattie

Niki worked at Merrill Lynch for 14 years, becoming Head of Market Structure for Europe, the Middle East and Africa. She left Merrill in 2008 and is now CEO of her own consultancy, providing strategic advice on market structure, and has already won big-name clients. She has also been selected as one of three UK representatives on a committee of 17 experts working on the review of the European Union's markets financial instruments directive.



Olivia Garfield

A former Accenture consultant, Olivia joined BT in 2003 and quickly transformed the financial performance of its Integrated Teleweb Unit. She soon rose through the company becoming Group Director of Strategy in 2007 and today is owner of BT's £1.5 billion roll-out of superfast broadband. In 2008 she was named one of PepsiCo's Business Women of the Future. She has an MA from Cambridge.



Orlagh Hunt

Orlagh became Group Human Resources Director at the Royal & Sun Insurance Group in 2006. She was previously Head of Human Resources for AXA Sun Life and has previously worked at Pepsi Cola, Walkers and Tesco in a variety of HR management roles. Orlagh is a member of the Chartered Institute of Personnel and Development and has a BA from Oxford University.



Pamela Conover

Pamela was named CEO and Division President of Seabourn Cruise Line in 2006. She was previously President and COO of Conrad Line Ltd and advisor for Citigroup. Pamela also has an NED position on the board of Florida Caribbean Cruise Association.



Penny Chalmers

As Head of Global Resources at International Power, Penny is responsible for Group human resources, information technology and corporate communications. She has 20 years of experience in the sector and has been with International Power since 1997.



Rebecca Hughes

Rebecca has been Head of Investor Relations at SVG Capital since 2005. Prior to joining SVG Advisers, she was head of client services at Global IR. She also worked at Taylor Rafferty, a leading IR consultancy where she managed a wide variety of investor programmes for publicly quoted companies. She has a degree in Politics and International Relations from UWE, Bristol.



Rhian Davies

Rhian is a Partner of Electra Partners LLP. She joined EPL in 1992 from PricewaterhouseCoopers where she qualified as a Chartered Accountant. She represents Electra's interest on the board of Lil-lets Group, and is a member of the Investment Committee at EPL.



Saila Miettinen-Lähde

Saila joined Talvivaara mining in 2005 as CFO and executive board member. Previously, she worked as a founding partner of SIDOS Partners and was a Director at D. Carnegie AB. Saila also served as Vice President of Business Development at Orion Pharma, and as Director of the Finnish National Fund for Research and Development, after holding various positions at Leiras Oy.



Sally Bott

Sally has been Executive VP and Global HR Director for BP since 2005. She also holds NED roles on the boards of UBS AG, Carter Burden Centre and Royal College of Music. Previously, Sally was HR Director at Barclays and Citibank, and Managing Director and Head of Global HR at Marsh & McLennan.



Sally Davis

Sally is a Divisional CEO at BT Group, heading up BT Wholesale. Prior to this she was BT's first Chief Portfolio Officer, having previously held various division presidencies. She holds an NED position at Logitech International and is a Fellow of University College London.



Sally Learoyd

Sally joined Hammerson as an HR Director in 2008. Her career spans the fields of travel, marketing, services and pharmaceuticals. She worked in client account management and a marketing service agency before turning to the field of HR.



Sara Weller

Sara has been Division Managing Director and board Executive Director at Argos since 2004. She is a member of the Government Advisory Group in Advertising and a Visiting Fellow at Said Business School, Oxford University. Sara has previously held an NED position at Mitchells & Butlers and an executive directorship on the board of Sainsbury.



Sheila King

Sheila became Division Director of Group Retail Leasing at Hammerson in 1994, after holding various positions at Capital Shopping Centres'. She is a founder of Cafe Rouge, Gourmet Burger Kitchen, Restaurant Group and Wagamama Group. Sheila is also an Advisor for the British Council of Shopping Centres and is a member of the Royal Institute of Chartered Surveyors.



Shelly Lazarus

Shelly has been Executive Officer at WPP since 2008. She has held top level roles in Ogilvy & Mather Worldwide such as CEO and Regional President. Board experience includes NED (General Electric, Merck & Co, Ogilvy & Mather Worldwide, Ann Taylor Stores, Retirement Equities Fund) and as an ED (Ogilvy & Mather Worldwide). She is repeatedly in Fortune's list of 50 Most Powerful Women.



Shona Dobbie

Shona is a Managing Director and Head of the Research Centre at Alliance Trust. Previous roles there include Chief Economist. Shona has a PhD from Imperial College London.



Silla Maizey

Silla Maizey is Acting Customer Director for British Airways. Prior roles include Head of Corporate Responsibility, Head of Procurement and finance positions in BA and HSBC. She previously sat on the boards of AAA, Airline Group and Bar UK. Silla is Chairman of the Chartered Institute of Purchasing and Supply, and was Director of the British Airways Flying Club (BAFC).



Sue Clark

Sue Clark was appointed Corporate Affairs Director at SABMiller in 2003. Prior to this, she held a number of senior roles in UK companies, including Director of Corporate Affairs at Railtrack Group and Scottish Power.



Sue Kean

Sue assumed the role of Chief Risk Officer at Friends Provident in 2008. Prior to that, she was Project Manager at the Financial Services Authority, Risk Director at AVIVA and Consultant at PricewaterhouseCoopers. Sue is a Chartered Accountant and was Committee Chairman for the International Association of Insurance Supervisors.



Sue Scholes

Sue has been Director of Communications and Investor Relations at AMEC since 2007. Prior to that, she was Head of Investor Relations at Brambles Industries and held various positions, including finance roles, at Cadbury Schweppes, Esso and GKN. Sue is a Chartered Management Accountant.



Sue Swenson

Sue has been CEO North America at Sage Group since 2008. She has had a number of COO and CEO roles in companies such as PacTel Cellular, and T-Mobile USA (Deutsche Telekom). Sue is currently an NED on the Boards of Wells Fargo Bank and mBlox and has also held this role at General Magic, Eltek ASA and Palm Inc.



Susan Kilsby

Susan is Chairman of EMEA Mergers and Acquisitions for Credit Suisse having held a variety of positions with them since the 1980's. Since the beginning of 2010 she has held an NED position with L'Occitane International. Susan has an MBA from Yale University. In 2009 she was recognised as one of the top ten women in finance.



Susan Ringdal

Susan joined HIKMA Pharmaceuticals in 2005 as Investor Relations Director, having previously worked for the pharmaceutical distribution and retail pharmacy group Alliance UniChem plc as Investor Relations Manager. She also has experience as an equity analyst at Morgan Stanley in London. Susan holds a BA in History from Cornell University and an MBA from London Business School.



Sylvie Gregoire

Sylvie joined Shire in 2007 and is currently President of Shire Human Genetic. She has over 20 years of pharmaceutical and biotechnology experience. Sylvie recently served as Executive Chairwoman of IDM Pharma, after having been CEO of GlycoFi and having held numerous leadership positions at Biogen Inc. She received her Doctor in Pharmacy degree from the State University of New York.



Taghreed Al-Shunnar

Taghreed is Executive Vice President of Strategic Business Development at HIKMA. In 1995, she was appointed as Marketing Planning Director of Hikma Pharmaceuticals Limited and in 2002 was promoted to General Manager. In 2005, Taghreed became Corporate Vice-President of Branded Pharmaceuticals MENA. Taghreed has an Executive MBA from INSEAD.



Tania De Welzjm

Tania is Group Financial Controller at Randgold Resources. She is a chartered accountant with ten years' experience in finance including eight years in the mining industry. She is responsible for financial reporting in the group as well as internal control procedures.



Tanith Dodge

Tanith became Director for Human Resources at Marks & Spencer in 2008 after previously being Group HR Director for WH Smith and Regional Senior VP Human Resources for Intercontinental. She held senior HR roles within Allied Domecq, Diageo and Prudential Corporation. Tanith has also sat on the board of Regent Inns as an NED.



Tanuja Randery

In COLT Telecom Group, Tanuja is Head of Multi-National Business, Major Enterprise Division. She was previously Vice President of Global Strategic Initiatives and Vice President of Software Operations at EMC Group. Prior to EMC, Tanuja was associate partner at McKinsey & Company. Tanuja has worked extensively in India and the US. She holds an MBA from Boston University.



Tiina Lee

Having worked with Deutsche Bank since 1997, Tiina is Head of UK Strategy and European Head of Financial Institution Capital Origination. She has also worked for Lehman Brothers and Hill Samuel Bank.



Tracy Robbins

Tracy has been Executive Vice President, Global Human Resources at InterContinental Hotels since 2005. Previously she was at Compass Group plc where she held the position of Group HR Director and Development Director. Throughout her career, Tracy has held a number of senior HR roles at British Home Stores, Forte Hotels and Tesco Stores.



Veronique Arnoldi

Veronique joined Aviva in 2008 and is the Chief Technology Officer, Aviva Investors. She transformed Aviva Investors' systems after Norwich Union rebranded as Aviva and has 15 years' experience in technology and systems, working for EDS, Centrica, Prudential and Mars. With a master's degree in nuclear physics from the University of Paris, Veronique stands out in the male-dominated technology world.